

Capital Facilities Program Update

San Rafael City Schools

June 11, 2018

Dr. Daniel Zaich



Tonight's Objectives

- SRHS Stadium Progress Update
- CEQA Compliance
- Owner Occupancy











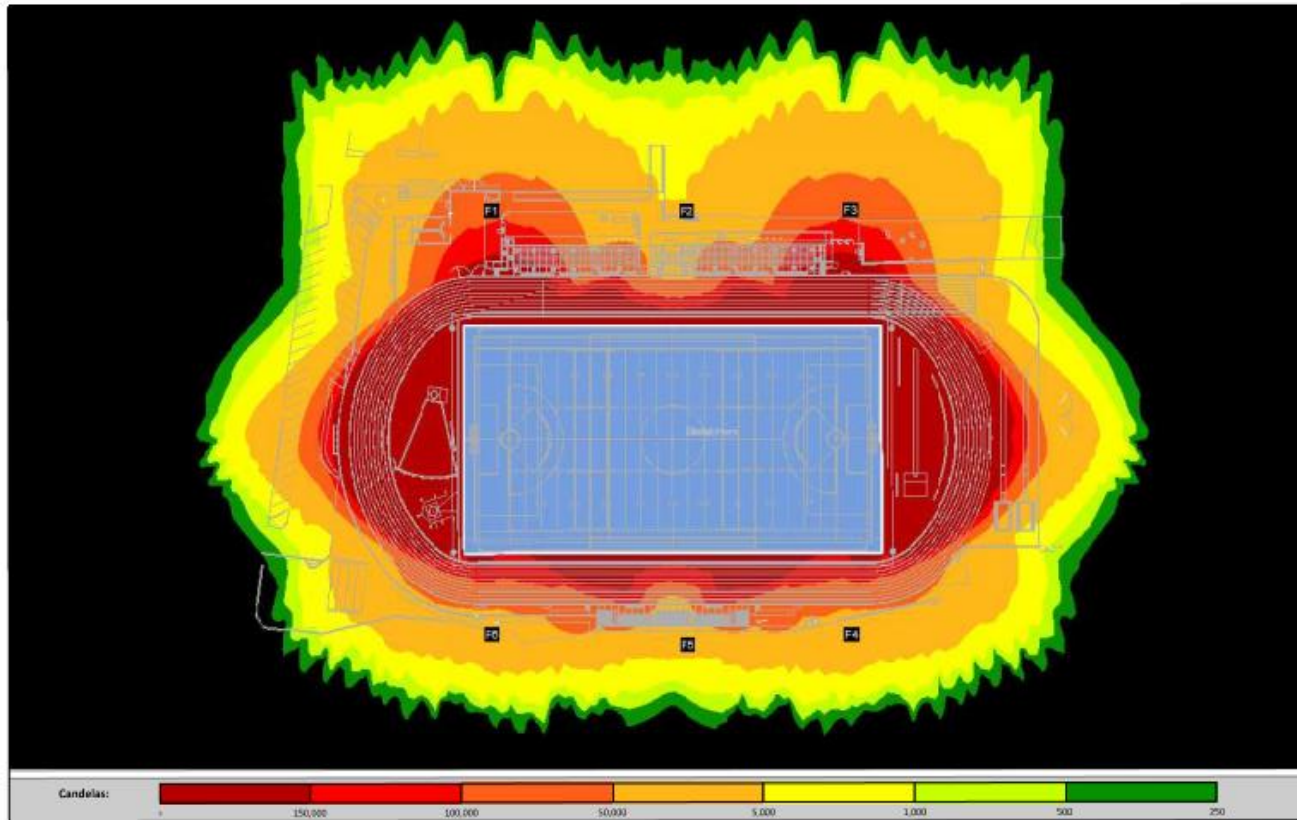


SRHS Stadium Progress

- Bleachers
- Landscaping
- Track Surface & Striping
- Entry logo
- Lighting, Testing, and Training Complete
- PA System Training Complete
- Temporary Fencing to Be Removed Tuesday, June 12
- District to Take Occupancy on Tuesday, June 12

C.E.Q.A. – E.I.R.

- Requirements During Construction: Dust, Mud, Storm Water Protection, Noise Abatement, Workhours
- Permanent Requirements: Lighting System Testing & Certification, Sound System Testing
- Hours of Operation: Use Plan Development Underway



GLARE IMPACT

Summary

Map indicates the maximum candela an observer would see when facing the brightest light source from any direction.

A well-designed lighting system controls light to provide maximum useful on-field illumination with minimal destructive off-site glare.

GLARE

Candela Levels

High Glare: 150,000 or more candela

Should only occur on or very near the lit area where the light source is in direct view. Care must be taken to minimize high glare zones.

Significant Glare: 25,000 to 75,000 candela

Equivalent to high beam headlights of a car.

Minimal to No Glare: 500 or less candela

Equivalent to 100W incandescent light bulb.

SOURCE: Carducci Associates, 2017

Figure 4.1-5
GLARE INTENSITY FROM LIGHTING AT NEW STADIUM OF SRHS

QUESTIONS